

## Contract Cleaning Services

Edge Cryojetics uses a high-density CO<sub>2</sub> pellet and interchangeable nozzles, providing the maximum possible aggression and flexibility for varying cleaning requirements.

Edge comes to your location utilizing site air and power for periodic or routine cleaning needs.

For very aggressive cleaning needs, or where plant air is unavailable, Edge uses portable air compressors (up to 300 psi).



Edge uses Cold Jet Equipment for a Greater Range of Cleaning Options. Edge Cryojetics is Cold Jet's authorized service provider.



**COLDJET**<sup>®</sup>  
The Force of Nature

## If You Haven't Seen CO<sub>2</sub> Cleaning Lately... You Haven't Seen CO<sub>2</sub> Cleaning

Setup used to take longer than most jobs. Now if plant air and standard 110 electric are readily available it can be completed in ½ an hour... by one man!

Downtime of the cleaning equipment itself is virtually non-existent due to tremendous advances in engineering. When you're ready for us...we will be ready to deliver for you!

The size and utility requirements of our equipment make CO<sub>2</sub> blasting *low impact* on your day to day operations.

Because heat helps in the cleaning process there is no need to take your hot molds off line for cleaning.

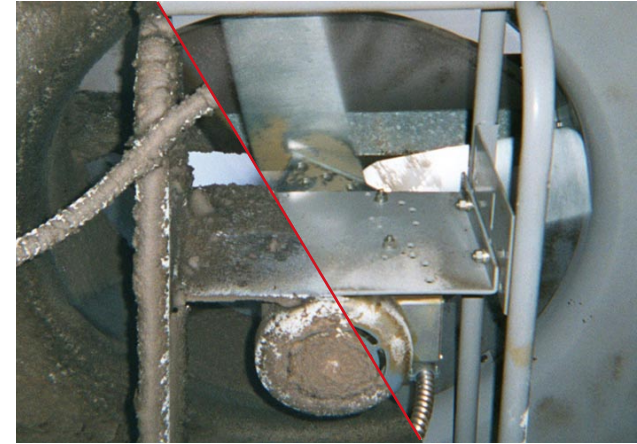
You can afford it! Due to improved efficiency in dry ice use, air handling, and lower maintenance cost, CO<sub>2</sub> blasting is usually no more expensive than more conventional methods. *In fact*, when you consider that no additional waste is generated and most work can be done online, *cost savings can be significant!*

**Interested??**

**How about a demonstration?**

**1-866-833-EDGE**

Providing an environmentally safe dry ice pellet blasting alternative for industrial and facility cleaning, surface preparation, and disaster recovery



**The Competition Is Tough  
Give Yourself an Edge**

**EDGE**  
*cryojetics, inc.*

PO Box 155, Mill Street  
Waterford, Ohio 45786

Toll Free: **866-833-EDGE**

Fax: **(740) 984-8036**

Visit us online at [www.edgecryojetics.com](http://www.edgecryojetics.com)

## What It Is

A cleaning process that uses CO<sub>2</sub> (Dry Ice) pellets in a high velocity air stream directed by a nozzle to impact the surface to be cleaned.

## How It Works

- Most contaminants become brittle due to the thermal shock created when struck with the -109°F CO<sub>2</sub> pellet.
- Contraction of the contaminant as a result of the low temperature breaks the bond between contaminant and surface
- Impact of the non-abrasive pellets at high velocity on the surface using compressed air as the propellant then whisks away the contaminant.
- On more viscous contaminants the scouring and cooling effect from the sublimation of solid CO<sub>2</sub> pellets as they expand to 800 times solid volume, flushes the material. Like high pressure water but without the rinse water containment and disposal problems.

## Where It Works

### Mold Cleaning—Hot, In Place



- rubber and plastic
- HDPE and PET containers
- reaction foam

### Food

- conveyor and stationary bake ovens
- wafer oven plates
- bacon fryers
- oven stacks and ductwork
- mixers and other processing equipment sterilizes equipment as it cleans

### Electrical Equipment



- motors; windings, armatures
- switch gear
- transformers
- sub-stations
- circuit boards
- wiring runs and cable trays

### Foundry

- core boxes - including screens
- permanent aluminum molds

### Soap

- heat exchanger plates
- one and two piece cosmetic molds

### Pulp and Paper

- paper making machine cleaning
- surface preparation

### Printing



- press overhaul cleaning
- gears, decks, guides
- analox rolls
- any intricate machinery

### Marine

- anti-fouling paint removal
- blistered fiberglass repair

### Surface Preparation for Inspection and Testing



- storage tanks
- de-aerators
- boiler; steam & mud drums
- magnetic particle inspection
- coatings removal

### Aviation (FAA Approved)

- landing gear
- brake components
- engine cleaning
- adhesive & sealant clean-up

### Automotive Parts Manufacturing



- equipment cleaning
- robotic welding equipment weld splatter removal
- painting systems cleaning
- mold cleaning
- carriers

### Automotive Assembly

- tire/rim assembly equipment
- rubber from test & alignment equipment
- windshield & body sealant
- personnel cooling fans
- limit switches
- AGV guide tape
- oven stacks and ductwork

### General Cleaning



- complete removal of oil and grease
- fire restoration
- graffiti removal
- mold remediation

## Why It Is Better

- No secondary waste
- Non-abrasive
- Non-conductive
- Non-toxic
- Meets EPA, USDA, and FDA guidelines